

Green Thumb Prints

Newsletter of the Hancock County
Master Gardener Volunteers



February 2010

*Gardening is our Passion
Education is our Purpose*



WHAT'S INSIDE THIS ISSUE:

- **Words I love to hear—by Bob Campbell**
- **Minimizing Salt Injury to Trees**
- **Fruit or Vegetable?**
- **2010 All American Selection—Flower**
- **Pictures, Meeting minutes, More**

Dates to Remember!

Thursday, February 11: Brown Bag Presentation, 6 pm, Extension Office. Bob Campbell presenting “*Slime Molds (and hopefully other delightfully disgusting growing things)*”

Thursday, February 11: MGV Monthly Meeting, Extension Office, 7:00 p.m.

Sunday, February 14: Happy Valentine’s Day.

Monday, February 15: Presidents’ Day.

Wednesday, February 17: Ash Wednesday.

Wednesday, February 17:
WFAN Phone Club, 9:00—11:00. Bill Jones, Nancy, & Marilyn Beltz

Upcoming Events

Thursday, Feb. 25: Diagnostic Workshop, Lucas County Flyer added at end of newsletter

Saturday, March 20: Art of Gardening, Lima. Flyer has been sent to all mgvs. More copies available in Workstation

Coordinator’s Corner

By Nancy Kronberg

As of Tuesday, Feb. 2, there are only 3 applicants for our 2010 MGV training classes. Ruth has sent information to many media sources. Flyers need to be posted around town. Please contact Ruth immediately if you are willing to help with distribution. Everyone received a flyer via e-mail which could be duplicated. More copies are also available in the workstation. We still need at least 7 additional applicants in order to hold classes. Even that isn’t ideal as I hesitate to ask OSU specialists to present to such a small group.

Thanks to everyone who attended the January Brown Bag Advanced Training. I had great fun putting this program together. I am also attempting to get a Conifer Name that Tree workshop set up. Sharon has informed me that all 2010 slots have been filled. No one should have any excuse for not being able to fulfill their advanced training/education hours this year.

While looking out my kitchen window last week, I was pleasantly surprised to see a large flock of robins in my hawthorn tree. Guess they don’t know it’s still winter. If they do, they don’t seem to care. I sure enjoyed seeing them.

Get ready to start early seeds, read garden catalogs and magazines, and most of all, stay warm.

See you at the Feb. 11 meeting.

Nancy



"Words I Love to Hear"

- By Bob Campbell

As I browse through the garden catalogues this winter in search of flower seeds, and look through their cultural requirements, a common refrain eliminates most from consideration: "prefers...gravelly or sandy soils", "avoid wet areas", "requires well-drained sandy or gravelly soil", "prefers very sandy or well-drained soil"; "light to sandy soil", "cannot tolerate damp soil conditions", "prefers ... sandy loam soil; avoid heavy clay".

It is always quite a thrill when I find a flower I like, and it says: "thrives in various soil conditions", or "will adapt to virtually all soil types" or, best of all, "thrives in almost any soil, including clay"! These are the words I love to hear!

I'm probably not the only flower grower in Master Gardeners with a basically clay soil supplemented by compost and decaying mulch. So I thought I'd share three flowers I'm trying this year. One thrives in clay. One thrives in water. The third thrives in clay and water.

The first flower is *Sphaeralcea munroana* (Munro's Globe Mallow). I have grown its look-alike cousin, *Sphaeralcea incana*, enjoying it many years before it gave away to disease.

Pictured below is another look alike, *Sphaeralcea coccineus*.



Photo by G.A. Cooper, courtesy of Smithsonian Institution

The variety *Sphaeralcea munroana* comes from High Country Gardens. Like the other varieties, it blooms in mid to late summer. It likes full sun and enjoys mid-summer heat. It grows to three feet or

higher, with a spread of two feet. High Country Gardens describes its soil requirements in words that are music to my ears: "Orange Globe Mallow is not the least bit picky about its soil and thrives in heavy clay."

A second flower I will be trying to grow is *Datura ceratocaula* 'Torna Loco.'



b-and-t-world-seeds.com/images/69028.jpg

The seed for this one comes from J.L. Hudson, Seedsman. Like many other Daturas, it is 2-3' tall, with fragrant white flowers. Unlike other Daturas, it has rosy stripes in the throat, a pale lavender edge, purple stems, seed pods that are smooth; and best of all, it does not mind lots of water. In fact it is "often semi-aquatic, growing in shallow water." I have a low place in my back yard in mind for it; I may also try to grow it in my water garden.

The third flower is a lily, *Crinum bulbispermum*, otherwise known as South African River Lily or Hardy Swamp Lily.



Photo by G.A. Cooper, courtesy of Smithsonian Institution

(Continued on page 3)

"Words I Love to Hear"

- Continued

(Continued from page 2)

The variety I am getting from High Country Gardens will look like this in shape; however, the flowers will be pure white, blooming in late spring. South African River Lily grows to a height of two feet with a spread of a foot and a half.

High Country Gardens says it "grows in all kinds of compost enriched soils including heavy clay" and that while it is "drought-tolerant", it "will bloom well in standing water." My kind of plant! I had to have it!

Image Sources:

Crinum bulbispermum: G.A. Cooper. Courtesy of [Smithsonian Institution, Department of Systematic Biology-Botany](#). United States, CA, Berkeley, University of California Berkeley Botanical Garden; first accessed through [plants.usda.gov](#)

Datura ceratocaula 'Torna Loco': B and T World Seeds, Route des Marchandes, Pagnignan, France, 34210; <http://www.b-and-t-world-seeds.com/homepage.htm>

Sphaeralcea: G.A. Cooper. Courtesy of [Smithsonian Institution, Department of Systematic Biology-Botany](#). United States, CA, Berkeley, University of California Berkeley Botanical Garden; first accessed through [plants.usda.gov](#)

Seed and Plant Sources:

Crinum bulbispermum, South African River Lily (container grown plant): High Country Gardens 2902 Rufina Street, Santa Fe, NM 87507-2929; www.highcountrygardens.com

Datura ceratocaula 'Torna Loco' (seeds): J.L. Hudson, Seedsman, P.O. Box 337, La Honda, California, 94020; www.JLHudsonSeeds.net

Sphaeralcea munroana, Munro's Globe Mallow (container grown plant): High Country Gardens 2902 Rufina Street, Santa Fe, NM 87507-2929; www.highcountrygardens.com

Note: Let's hope Bob provides us with pictures and info on how these plants grow this season!

Gaillardia F1 *'Mesa Yellow'*



2010 AAS Flower Winner

'Mesa Yellow' is the first hybrid blanket flower with a controlled plant habit and prolific flowering. The 3 inch daisy like flowers and globe shaped seed heads offer a superior presentation of color which continues throughout the summer. Gardeners will be glad to know they can cut the blooms for casual bouquets. The flowers, when left on the plants, will attract butterflies.



Judges noted the improved plant habit of 'Mesa Yellow' with mature plants reaching 20 to 22 inches in a full sun garden location. The neat, mounded plants are adaptable to smaller space gardens or any type of containers. When planted near the inside edge of the container, they will cascade down the container. They are relatively maintenance free. 'Mesa Yellow' plants proved to be wind and rain resistant, meaning the plants recover quickly from severe weather. 'Mesa Yellow' was bred by PanAmerican Seed Company and blooms two to three weeks earlier than comparisons.

Minimizing De-Icing Salt Injury to Trees

Source: University of Minnesota.edu
Gary R. Johnson and Ed Sucoff

Tons of de-icing salt are applied to state and municipal roads each winter. De-icing salts (primarily sodium chloride) are helpful in providing dry, safe pavement for high-speed traffic. They are also used in large quantities within our urban areas to improve safety on streets, driveways, parking lots, and sidewalks. Despite the benefits, the extensive use of salt causes widespread damage. De-icing salt has caused the disfiguration of trees and shrubs along highways, and may have contributed to the decline and death of many city shade trees.

Injury occurs when salt is deposited by spray or drift on dormant stems and buds of deciduous woody plants, and on the stems, buds, and needles of evergreens. Injury may also occur when excessive amounts of salt accumulate in the root zone of these plants.

Both spray salt and soil salt can cause stem and foliage disfigurement, reduce growth, and even cause death.

Spray-salt damage is most evident along heavily traveled highways where high speed and high volume truck traffic have deposited salt spray on adjacent plants. Damage is most severe within 60 feet of the road, although it can sometimes extend much farther (e.g., spray deposited on elevated highways).

Another source of plant injury occurs gradually, due to the buildup of high salt levels in the soil. This buildup occurs along city streets, driveways, and sidewalks when salt runoff washes into the soil and when salt is plowed and shoveled onto boulevards and lawns.



Toxic quantities of sodium chloride can damage plants by:

- by direct absorption into the roots, and
- by contributing to the deterioration of soil structure, thereby impeding soil drainage and root growth.

Overmaturity and drought can intensify the problem of high salt levels. For example, prolonged drought interacts with soil salt to increase damage to trees. Also, as trees age they lose their ability to tolerate soil- and salt-related stresses.

Control of infectious diseases is complicated by high salt levels in the soil. For example, the Dutch elm disease epidemic forced the removal of many elms along streets and boulevards. The young replacement trees were subjected to accumulated salt in their planting holes as well as the dangers of additional salt spray.

Salt-related damage to city and highway trees is costly; injury means increased maintenance expenses for pruning, fertilizing, and other extra care, as well as the expense of replacing removed trees.

Symptoms of Salt Injury

The symptoms of salt injury are similar to injury caused by other stresses. When in doubt, suspected salt injury can be verified with soil and tissue analysis, as well as observation of the planting site loca-

(Continued on page 5)

Minimizing De-Icing Salt Injury To Trees

Continued

(Continued from page 4)

tion where the damage occurred.

Salt spray commonly causes bud death and twig dieback in deciduous plants. Subsequent shoot growth results in the development of "witches'-brooms" (tuft-like growths) from the basal section of branches facing the road. The symptoms become evident when growth resumes in the spring. In addition, salt-damaged deciduous trees and shrubs leaf out later in the spring.

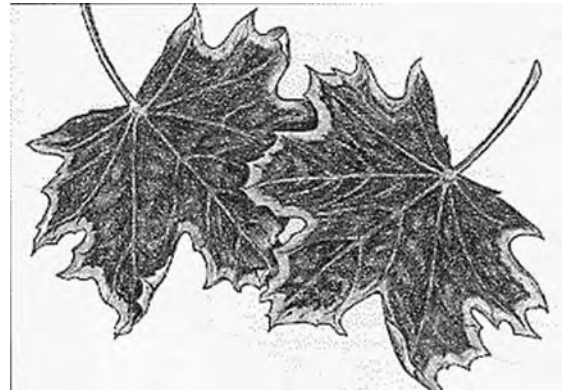
Witches'-brooms" are a common condition along roads because of spray salt injury.



On conifers such as pines, spruces, and firs, salt spray causes moderate to extreme needle browning, beginning at the tips of needles and twigs facing the road. Browning usually is first evident in late February or early March and becomes more extensive through spring and summer.

Soil salt damage to deciduous species often becomes evident late in the summer following the growing season in which the salt damage occurred, or during periods of hot, dry weather. However, many years of high soil salt accumulation may pass before injury becomes apparent. The symptoms initially include an abnormal foliage color, needle tipburn, and marginal leaf burn progressing toward the mid-vein of affected

leaves. Progressive symptoms may include a reduction in leaf, flower, and fruit size; premature fall coloration and defoliation; stunting; and a general decline in health.



(Marginal leaf burn or "scorching" is often caused by high soil salt accumulation.)

Salt Injury Patterns for Metro Areas

- Damage increases as traffic increases.
- Injury decreases with distance from the road; most injury occurs within 60 feet of the road.
- Injury is more severe on the side facing the road; plants are often one-sided due to branch dieback.
- Branches covered by snow or above the spray-drift zone are less likely to suffer injury.
- Spray injury to conifers becomes apparent in late winter, but injury to deciduous plants is not evident until leaf emergence and expansion.
- Salt spray penetrates only a short distance into dense plants. Plants in sheltered locations generally lack injury symptoms.
- Plants that are less winter-hardy may be injured more severely.
- Plants at street intersections, at the foot of a hill,

(Continued on page 6)

Minimizing De-Icing Salt Injury To Trees

Continued

(Continued from page 5)

near major drainages from the street, or on poorly drained soils are injured more severely.

- Plants damaged over several years can lose vitality and decline; these plants are subsequently more vulnerable to secondary diseases and insect damage.

Salt-Tolerant Species

Although salt-tolerant species are available, there are relatively few of them. If only tolerant species are planted, there are few opportunities to match tree species with soil characteristics, and the risks of a single disease or insect pest destroying a high proportion of the trees are increased. No species is completely tolerant of salt injury; even salt-tolerant trees have limits on the amount of salt they can accept before they weaken and become vulnerable to other problems.

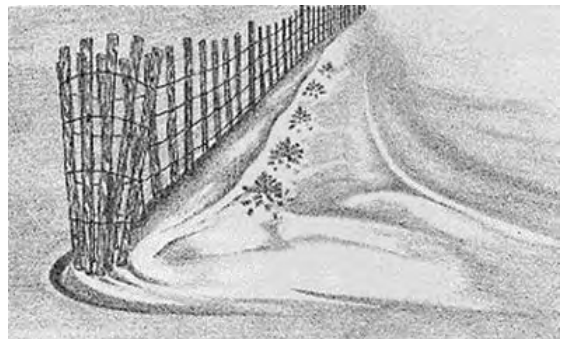
Minimizing Salt Injury

Use the following guidelines to minimize or possibly eliminate salt damage to trees and shrubs in urban areas.

- Avoid de-icing salt completely, or reduce quantities applied by pre-wetting the salt with a liquid such as salt brine or by mixing the salt with abrasives such as sand, cinders, and ash. Limit applications to high-risk locations such as high-speed roads, intersections, hills, steps, and walkways. Use alternative de-icing salts such as calcium chloride and calcium magnesium acetate (CMA).
- Improve the structure and drainage of poorly

drained soils.

- Reduce sodium. Add organic matter, activated charcoal, or gypsum, and thoroughly leach the soil.
- Protect susceptible plants; construct a physical barrier made of plastic, burlap, or snow fencing. Place the barrier between the pavement and the plants.
- Avoid high risk sites; plant trees and shrubs away from the spray drift zone and areas where salt-laden snow will be deposited.
- Maintain plants in a healthy condition. Provide adequate irrigation and mulching to reduce water loss. Prune, add fertilizers to correct nutrient deficiencies, and control damaging diseases and pest infestations.
- Use plants sufficiently tolerant of the expected exposure to salt. This is the only successful technique in high-salt locations.



A simple snow fence can provide effective protection for susceptible plants.

EAB
Quarantine



Gypsy Moth
Quarantine

??? Fruit or Vegetable ???

While looking at seeds at Menard's, I was getting more confused by the minute. Am I looking at fruits or vegetables? Thinking back to my Master Gardener training, I somewhat remember which was which, but the seed experts (such as Burpee) are classifying my pumpkins and green beans as vegetables. So what are they? Should I look up Norma Smith (who works at Menard's) for her assistance? Could I get her confused too? I decided to turn to Google for definitions.

A fruit is the often sweet and fleshy part of a plant that surrounds the seeds. However, the term 'fruit' has different meanings depending on context. The botanical meaning is: the ripened ovary—together with seeds—of a flowering plant—incorporating the ripened ovary and surrounding tissues. Fruits are the means by which flowering plants disseminate seeds. The sweetness of fruit encourages animals to eat it and thereby spread the seeds.

In the culinary language, the term (fruit) usually refers to just those plant fruits that are sweet and fleshy (plum, apple, orange). However, many common vegetables as well as nuts and grains, are the fruit of the plant species they come from. No one terminology really fits the variety that is found among plant fruits.

A vegetable is an herbaceous plant cultivated for an edible part (beet, spinach, broccoli).

In case your still confused, don't feel bad. The question of whether the tomato is a fruit or a vegetable found its way into the United States Supreme Court in 1893. In *Nix v. Hedden*, the tomato was ruled a vegetable for the purposes of the 1883 Tariff Act on imported produce. However, in this ruling, the court did acknowledge that botanically speaking, a tomato was a fruit.

The most important question to ask when determining whether or not we have a fruit or vegetable is this:

DOES IT HAVE SEEDS?

If the answer is yes, then you probably have a fruit. Of course, this makes what we thought fruits to be vegetables and what we thought were vegetables are now fruits. Do we care to address this during the next MGV monthly meeting???

Fruits:

- Peapods
- Nuts
- Tomato
- Pineapple
- Peach
- Mulberry
- Banana
- Cucumbers
- Squashes
- Zucchini
- Green Beans
- Avocados
- Green, red, yellow peppers
- Chilies
- Pumpkins
- Lettuce
- Olives
- Apples
- Eggplants
- Corn kernels
- Plums
- Oranges
- Cereals/grains



Vegetables

- Beets
- Spinach
- Broccoli
- Cauliflower
- Potato
- Lettuce
- Unripe corn and peas
- Radishes
- Celery
- Carrots



Photos from OSU Webgarden

Master Gardener Volunteer Meeting Minutes

Thursday, January 14, 2010

President Bill Jones called the meeting to order with approximately 29 members present. Bill talked about the new EAB chart on the website. Most of Ohio now has the Emerald Ash Borer present. Vice President, Marty Davis commented that we had a really good group. He is looking forward to learning a lot in the coming year. Minutes from the Secretary's report were approved by Duane Rettig and seconded by Linda Dyar. No report from the Treasurer.

Nancy addressed the following:

- ◆She finished passing out Master Gardener certificates and name badges to the Annuals not present at the December dinner.
- ◆Many thanks to the volunteers attending the wreath-making classes. Another great success. Nancy suggested we try to do two earlier classes next time.
- ◆Patty volunteered to work with Peg to set up informational flyers on the Masters Gardeners for distribution.
- ◆All chairpersons are in place for all the volunteer project assignments for 2010. Nancy urged everyone to review the Master Sheet that was made available in the January Newsletter.
- ◆No applications to date have been turned in for Master Gardening Training classes. Ruth offered to send out information to different Radio Stations in an effort to advertise. Cost this year will be \$125 per person. We need a minimum of 10 people to do a class. It is possible that we will have to wait until fall to offer this training if we do not get enough people soon.
- ◆February newsletter will talk about Rain Barrels and Rain Gardens Seminar Series. Cathy Zernechel and Nancy will be working together on this project.

Dick Deerhake indicated that signup sheets will be available in February for the Demo Gardens. Anyone interested in the tomato trials were to see him after the meeting.

Ruth Furiate indicated that she still needs presentation speakers and people to sign up for WFIN Phone Club. She mentioned that last year that 11 talks were presented with a total of 347 people in attendance.

Linda Dyar indicated that she is still getting hours in for the end of the year. Make sure she is contacted for any changes to address, phone number, and emails.

Signup sheets for "Let's Go Gardening" will be available in February.

Sharon passed around a Courier info contact list for review and for people interested in doing an interview with "The Courier" on gardening topics.

Noreen Walters is making an effort to contact the new person in charge at the library. It was indicated to her that we could do a Saturday AM presentation. It was decided that a presentation this early on a Saturday would not be well attended. It was suggested that maybe we do posters, if permitted. Information will be forwarded as available.

Cathy Z indicated that the Leisure Living Show dates were March 26, 27, and 28 this year. Signup sheets will be available in February.

Dick Deerhake indicated that a new row was added at the Community Gardens of the Presbyterian Church this year. He is still talking to different people about the possibility of a Community Garden at some of the sites that were torn down as a result of the flood. No information available at this time.

Sharon Hammer Baker is very pleased at the response she is having with the "Brown-Bag" advanced training classes to be offered one hour prior to our regular meeting. Bob Campbell has offered to do a presentation on "Slime Mold" for February and Larry Schock will do one on roses later this year. This class was very well received by the group.

The plant exchange will be the second Thursday in May this year at Bill Jones' house---weather permitting.

The picnic is scheduled in June this year. If we have Master Gardening training classes in beginning in March, the picnic will be postponed to July or August as the Recognition Banquet will be in June.

Larry Schock wondered about the possibility of 'tired' soil.

Marty Davis brought Christmas dinner pictures which were passed around.

The meeting adjourned at 8:00 PM.

The next meeting will be February 11th at 7:00PM. Advanced training will begin at 6:00PM

Respectfully submitted, Cathy Zernechel, Secretary



Welcome to our new Master Gardener Volunteers!

Front Row: Cathy Grossman, Barbara Phillips Back Row: Linda Laux, Tracey Pierce, Marilyn Beltz, Mary Hanson & Marty Davis. Receiving certificates in January were: Cindi Chasse, Becky Patrick, Dianne Solis, Larry Schock & Patty Woodard.



 * **Christmas** *
 * **Party** *
 * * * * *



The Master Gardener *Green Thumb Prints* is a publication of the Hancock County Extension Office, 7868 Hancock County Road 140, Findlay, OH, 45840, 419-422-3851. The Master Gardener Coordinator is Nancy Kronberg.

Ohio State University Extension embraces human diversity and is committed to ensuring that all research and related educational programs are available to clientele on a nondiscriminatory basis without regard to race, color, religion, sex, age, national origin, sexual orientation, gender identity or expression, disability, or veteran status. This statement is in accordance with United States Civil Rights Laws and the USDA.

Keith L. Smith, Ph.D., Associate Vice President for Agricultural Administration and Director, Ohio State University Extension TDD No. 800-589-8292 (Ohio only) or 614-292-1868

To be discussed at the February 11 MGV Meeting



EXPERIENCE RAIN GARDENS!

Plan on attending one or more of these free workshops to learn how you can *"go green"* at home by creating a beautiful Rain Garden. Learn how to make and install water saving Rain Barrels!

Workshops Schedule:

- February 25, 2010** – 6:30 p.m. – “Design Principles; Rain Gardens & Rain Barrels”
Hancock County Agricultural Service Center
7868 CR 140, Findlay, Ohio 45840
- March 25, 2010** – 6:30 p.m. – “Rain Barrel Design”
Hancock County Agricultural Service Center
7868 CR 140, Findlay, Ohio 45840
- April 22, 2010** – 6:30 p.m. – “Plant Options & Ground Preparations”
Hancock County Agricultural Service Center
7868 CR 140, Findlay, Ohio 45840
- May 15, 2010** – 9-12 a.m. – “ Make Your Own Rain Barrel”
Riverside Recreation Area – Ranger Station
***Material Fee Charged**

Register for any or all of these free workshops by calling:
Hancock Soil & Water
419-422-6569

A collaborative effort of:



Hancock Park District



Hancock Soil & Water Conservation District



OSU Extension Master Gardener Volunteer Program



Upcoming Programs

DIAGNOSTIC FUNDAMENTALS FOR MASTER GARDENER VOLUNTEERS

WHEN? Thursday, February 25, 2010

WHAT TIME? 10am to 3pm

WHERE? Toledo Botanical Garden Conference Building, Terrace Room
5403 Elmer Dr. Toledo, Oh. 43615

PRESENTER? Denise Ellsworth, Summit County Educator, Agriculture & Natural Resources. Summit County Master Gardener Volunteer Coordinator.

FOOD? Please bring a sack lunch, we will provide coffee, tea, etc. We will NOT have bottled water. Please bring your own mug and water.

COST? \$10.00 (WHAT A DEAL!!!!) You may pay at the door.

WHY? This one-day workshop will teach OSU Master Gardeners how to approach diagnostic challenges that come to us in person or on the phone. The session will teach the overall diagnostic approach, with emphasis on the "20 Questions" of plant pest diagnostics, as well as signs and symptoms of plant pests. "Diagnostic Fundamentals" is targeted to new Master Gardeners or those looking to improve their diagnostic skills.

QUESTIONS? Call Lee @ 419-578-6783 or
Email Lee @ richter.71@osu.edu

RESERVATIONS? Please call Mary @ 419-578-6783 or
Email Mary @ flores.29@cfaes.osu.edu



Franklin County
Master Gardeners



OSU Extension

2010 Home Gardener Series

Winter Series (January-March)

January	February	March
23 Perennial Gardening	13 Annuals	20 Growing Fruit
30 Pests: Insect, Weed, and Invasive	20 Herbs	27 Pruning

Spring Series (April-June)

April	May	June
10 Small Space Vegetable Gardening	15 Landscape Design	19 Rain Barrels
17 Tomato Techniques	22 Shade Gardening	26 Rain Gardens

Summer Series (July-September)

July	August	September
10 Sustainable Gardening	14 Dry Landscaping	11 Fall Lawn Care
17 The Fall Vegetable Garden	21 Water Gardens	18 The Four Season Garden

Fall Series (October-November)

October	November	December
9 Winterizing the Garden	13 Composting	No classes
16 Seed Collecting		

Classes are 9 a.m. to noon on Saturdays.

All classes will be held at Ohio State University.
Wittmeyer Conference Room, Waterman Farm
2490 Carmack Road, Columbus, OH 43210

Class descriptions, maps, directions, and parking information available at:

franklin.osu.edu/topics/master-gardener-volunteer-program

Registration Fees: \$40.00 per class

Register for four classes (winter, spring, summer, fall) in a single e-mail or phone call and save \$10.00 on total registration fee.

Register by e-mail or phone:

Cory Skurdal
Master Gardener Program Assistant, OSU
Extension, Franklin County
614-247-6046
skurdal.1@osu.edu