

GREEN THUMB PRINTS

Gardening is our Passion Education is our Purpose

February 2022



Monthly Membership Meetings in February

February 3rd-ZOOM

7:00 PM

Presentation of Project Plans and Budgets

February 10th -IN PERSON

6:00 PM

Brown Bag will be presented by Cheryl Everett on

“The Buddleia’s Usefulness in the Garden”

Schedule of Events

- Feb 3rd.....Feb Monthly Meeting
- Feb 9th.....MGV Training #1
- Feb 10th.....Feb Monthly Meeting
- Feb 16th.....MGV Training #2
- Feb 23rd.....MGV Training #3
- March 2nd.....MGV Training #4
- March 9th.....MGV Training #5
- March 10th.....March Monthly Meeting
- March 16th.....MGV Training #6
- March 23rd.....MGV Training #7
- March 30th.....MGV Training #8

IN THIS ISSUE.....

- Upcoming Events.....Pg 1
- Reuben’s Ruminations.....Pg 2
- Meeting Minutes.....Pgs 3-4
- 2022 Committee Chairs/Leads.....Pg 5
- MG Training Classes.....Pg 6
- Hands on Connect (HOC).....Pg 7
- Goals and Project Plans.....Pg 8
- Sign Up for MG Activities.....Pgs 9-10
- Repotting Houseplants.....Pgs11-12
- It’s Time To.....Pg 13

Reuben's Ruminations
February 2022

President's Notes for February, 2022

Ain't that a kick in the pants?! Just as we were all looking forward to 2022 being a lot different from 2021, it suddenly looked like *déjà vu* all over again as we held the January meeting on Zoom. I suppose that since half our officers are in Florida, it probably was just as well to meet on Zoom.

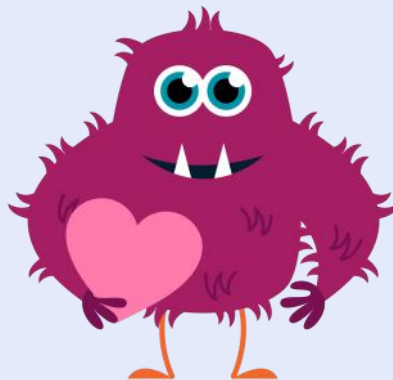
It looks like all the committees are off and running, putting together plans for this year. We're really looking forward to getting out and doing more educational activities for the county. And the big event is the training class, which should bring us some new members. We'll be counting on everyone to show up to help and for many to become mentors for the class members.

We have certainly missed VMS as a means to help us stay organized, so we look forward to starting training on the new system in the coming weeks. Thanks, Karl, for leading this.

Meanwhile, I hope everyone is enjoying their seed catalogs. For those who start veggie plants from seed indoors, you know it's about time to organize everything. I think I'll just buy plants this year, but I hope availability is better than it was last year.

I'm looking forward to getting together in person, hopefully soon. Meanwhile, stay warm!

Reuben DeBolt



Hancock County Master Gardener Volunteers
Meeting Minutes
January 13, 2022

The Zoom meeting began at 7:00 pm. President Reuben DeBolt greeted the group then turned the meeting over to VP Lisa McClain.

Minutes of the Previous Meeting:

The minutes of the November 11, 2021 membership meeting were approved; motion: Peggy Biolchini; second: Tim Brugeman.

Treasurer's Report--Ann Woolum

- \$6,878.80 cash on hand
- \$750.91 restricted for Community Garden
- \$6,127.89 unrestricted funds
- Shirts purchased in the fall from OSU have still not been invoiced so we owe approximately \$400.
- Treasurer's report approved; motion: Rose Morrison; second: Peggy Biolchini.

President's Report – Lisa McClain

- Expressed gratitude at seeing President DeBolt recovering from his illness.
- Thanked Betsy DeFrancesco for running the Wreath Class.
- Rose Morrison is the new chair of the Social & Fundraising committee.
- Peggy Biolchini will chair the Brown Bag committee.
- Requested a volunteer for Historian; Debra Evans volunteered.
- Thanked Karl Farwig for preparing the presentation for tonight's meeting.

Volunteer Coordinator's Report-Karl Farwig

- VMS no longer being used. We will start using the new system in January or February. He will train 5 to 7 people at time and hopes to have the whole group using the system by the end of April. The usual annual certifications will be carried over from last year until we are on the new system.
- MG Class Update –
 - There was an article in the Courier and there will be a radio announcement tomorrow.
 - He used a Facebook Boost Ad which has had 8000 views so far and many responses.
 - Four people have paid, 6 are very interested and 5 more are interested but have not filled out paperwork yet.
 - Classes will be Wednesdays from 9 am to 4 pm.
 - Inquiries have been split 50/50 between wanting day vs. evening classes. Hardin County is offering an evening class, so he has referred people there if they need it.
 - Working on the class agenda.
 - Orientation to be held Wednesday 1/19/2021 at 4 pm.
 - A plan is needed for class refreshments. Rose Morrison will coordinate.

(Continued)

Hancock County Master Gardener Volunteers
Meeting Minutes
January 13, 2022

(Continued)

Old Business - None

New Business:

Strategy & Goals Presentation - Karl Farwig

- 2021 Review
- Purpose of the Group
- Goals for each Committee
 - Request from members made that the list of who is doing what for speakers, Courier articles and refreshments be put into the newsletter.
 - Suggestions were made for groups that can work together to do presentations
 - 50 North wants guidance for people using their raised garden beds.
 - Topics discussed for Brown Bag presentations: tree identification; native plants; attracting birds & pollinators; low maintenance gardening; invasive species. Requested this list be published in the newsletter.
 - Question asked if there is any space at the Ag Building to have an actual library and storage. A space is being planned to have a joint space for all educators in the building.
 - It was requested that each member pick a committee to be on and either list that in the Zoom chat box or respond to Karl's email which will be sent after the meeting.
- Next Steps
 - The committees need to meet.
 - There will be a follow-up meeting on January 27th, on Zoom.
- Comments & Questions – None.

Audit Committee – Bill Jones & Randy Greeno have volunteered for this committee. The report will be due June 1, 2022.

Refreshments for MG Class – Light snacks for morning and afternoon. Rose Morrison will organize, and Debra Evans agreed to help. Anyone else willing to help should email Rose.

Motion to Adjourn: Rose Morrison; second: Judi Clymer. Motion passed. Meeting adjourned 8:15 pm.

Next Meeting: February 10, 2022.

Respectfully Submitted: Elaine Reynolds



Leadership, Committee Chairperson, and Project Leads 2022

Executive Committee

Karl Farwig, Volunteer Coordinator	419-348-7577	khfarwig@gmail.com
Reuben DeBolt, President	419-722-4155	reubendebolt@hotmail.com
Lisa McClain, Vice President	419-722-6235	enjymzk@gmail.com
Ann Woolum, Treasurer	419-348-5191	awhcpa@aol.com
Elaine Reynolds, Secretary	419-306-1725	elaine.reynolds@outlook.com

Administrative Committee

Lynn Farwig, Administration Lead	419-348-0915	lynnfarwig@gmail.com
Newsletter, Lisa McClain	419-722-6235	enjymzk@gmail.com
Media, Betsy DeFrancesco	908-910-5586	betsmart_207@yahoo.com
Membership, Lynn Farwig	419-348-0915	lynnfarwig@gmail.com
Apparel, Debra Evans	419-271-1993	debraevans9093@gmail.com
Historian, Debra Evans	419-271-1993	debraevans9093@gmail.com

Social and Fundraiser Committee

Rose Morrison, Social/Fundraising Lead	419-889-3931	rmorrison@woh.rr.com
Fundraising, Betsy DeFrancesco	908-910-5586	betsmart_207@yahoo.com
Summer Picnic, Marlene Brunswick	419-310-0882	rpmbdb@aol.com
Christmas Potluck, Marilyn Beltz	419-423-3416	mbeltz@woh.rr.com
Refreshments, Linda Leiendecker	419-889-2958	lindaleien@gmail.com
Plant Exchange, Karla Dennis	419-722-5953	karladennis76@gmail.com

Service Committee

Tim Brugeman, Lead	419-672-8897	tbrugeman@woh.rr.com
OSUE Garden, Peggy Biolchini	419-306-4235	biolchini@aol.com
Sensory Garden, Betsy DeFrancesco	908-910-5586	betsmart_207@yahoo.com
Community Gardens, Brint Simmons	419-306-5446	brintsimmons@sbcglobal.net
Mugs of Joy, Linda Laux	419-788-9478	lauxlj@yahoo.com
Mugs of Joy, Rose Morrison	419-889-3931	rmorrison@woh.rr.com

Teaching Committee

Judi Clymer, Lead	419-345-8086	bbjec94@bright.net
Courier Articles, Laurie Pressel	419-721-2581	wurthwriting@woh.rr.com
Speakers Bureau/Library, Linda Finsel	419-424-3213	lindamf@earthlink.net
Mother's Day Lets Go Gardening, Judi Clymer	419-345-8086	bbjec94@bright.net
Fair Booth, Doris Salis	419-422-3560	salis@findlay.edu

Education Committee

Peggy Biolchini, Lead	419-306-4235	biolchini@aol.com
Brown Bag, Peggy Biolchini	419-306-4235	biolchini@aol.com
MGV Training Classes, Karl Farwig	419-348-7577	khfarwig@gmail.com
Seminars, Lisa McClain	419-722-6235	enjymzk@gmail.com
Ask-A-Gardener, Doris Salis	419-422-3560	salis@findlay.edu
Field Trips, Ann Woolum	419-348-5191	awhcpa@aol.com
Mentors, Tim Brugeman	419-672-8897	tbrugeman@woh.rr.com

MG Training Classes

Karl Farwig



The MGV training class will be starting on Wednesday, February 9 at 9 am. We have 13 people registered with 1 possible person joining the class. Manuals have been ordered and agenda is being finalized. As soon as the agenda is confirmed, we will be sending it to the membership so you can attend the sessions and obtain your continuing education hours for the year. In order to

support our new class, we hope we can get at least 5 to attend the sessions and we would like up to 10 to attend.

Tim Brugeman is working to assign mentors to the class members, and I hope you volunteer to help us teach and guide the new class members. Rose Morrison is organizing the volunteers to bring snacks to share for the class each session. If you would like to volunteer with snacks, please contact Rose. I could use some help setting up and tearing down the conference room. Help includes setting up the room and putting the room back in the correct way along with putting out educational material in the back of the room for class members to review or check out. If you would like to assist, please let me know. I especially need help on March 2 and 9 as I will be out of the country and unavailable to contact.

I am looking forward to a great bunch of class members and welcoming them into our membership. Please support them in any way you can as well.

New System - Hands On Connect (HOC)

Karl Farwig

I have been working to setup the new system and working through the processes and limitations. You should have received an email from me that requested to setup your account. As of now, 16 of our 32 active members have set up their account. I am requesting the rest of you to take the time to find the email with the attachment of how-to setup your account and proceed to do it. If you need me to resend the email or have problems with the setup, please let me know and I'll have Columbus assist in resolving the issue.

I will be giving overviews of the system at the next several meetings as I work through trying to setup the system for how we use it in Hancock County. A training document has been drafted and is being reviewed by 4 members as they work through the system and providing feedback. Soon, those of you who have an active account will be getting a notification for training which I will do via Zoom initially. After that point, you will be able to enter time and use the system.

Let's all be patient as we adjust to the new system and if you have trouble, please ask me to assist you. The system is not like the VMS system, but I'm doing my best to try to configure the best I can for how we do our business.



Committee Goals and Project Plans

Karl Farwig

Each committee has done a great job of working through the goals and coming up with project plans to help accomplish the goals for 2022. I appreciate everyone embracing this effort to transition back to a more educational focus. There was a request for you to volunteer for committee/project work as well as to tell us what kinds of things you are proficient in. This information is being collected and will be distributed to the group and project leads. If you haven't responded to this request, I ask that you respond in the next week.

There will be a meeting on Thursday, Feb 3 to allow the committee to discuss the project plans as well as the budget for 2022. Please attend as this will allow you to be best informed on what is going on within our projects. This will be a Zoom meeting.

Our next regular meeting on Feb 10 will be in person in the OSU Extension conference room with Cheryl Everett giving the Brown Bag followed by a business meeting. Please come to this and support Cheryl, our new intern.

January 13, 2022

Monthly Meeting Recording

[https://osu.zoom.us/rec/share/
mMtpHA4b5nzSB-
kelsShsgMt7_P4fXzQNwgoBogvnkOHuArGfUij5hLYuDwrZf-
E9.SqU13fl9D6rMaRn-](https://osu.zoom.us/rec/share/mMtpHA4b5nzSB-kelsShsgMt7_P4fXzQNwgoBogvnkOHuArGfUij5hLYuDwrZf-E9.SqU13fl9D6rMaRn-)

MG Sign Ups

Brown Bag Sign Up

Peggy Biolchini

There are still several Brown Bag openings for 2022. MGV do not have to be an expert in the topic to present. They should be willing to research about the topic and learn from it to share with others. For example, I knew nothing about Tree of Heaven, but I researched it and gave a Brown Bag presentation. Now I can spot them all over the area.

If you are willing to present a Brown Bag in August, October, or November please contact Peggy at 419-306-4235 or biolchini@aol.com

February	Cheryl Everett	The Buddleia's Usefulness in the Garden
March	Karla Dennis	Low Maintenance Vegetable Gardening
April	Patrick Flinn	Garden Tool Maintenance
May	---	Plant Exchange
June	Linda Finsel	Roses
July	---	Summer Picnic
August	<input type="text"/>	<input type="text"/>
September	---	County Fair
October	<input type="text"/>	<input type="text"/>
November	<input type="text"/>	<input type="text"/>
December	---	Christmas Party

Topics of interest from our member survey are:

Trees and Tree ID (could be one tree, or look a like trees, or a family of trees)

Pests, weeds and/or invasive plants (this could be on one invasive plant or a group)

Organic Methods (researched based information please)

Low maintenance gardening

Attracting birds and pollinators

Cooking and/or canning

Lawn care with or without chemicals, how to repair, overseed, etc.

Findlay-Hancock County Library Speakers

April 19th-6:00 PM-Debra Evans-Spotted Lanternfly

May 18th-6:00 PM-Linda Finsel-Roses

Please contact Linda Finsel at 419-424-3213 or lindamf@earthlink.net if interested in speaking in the community.

Continued

MG Sign Ups

Continued

Courier Article Sign Up

We have a few months still available for Courier Articles.



February	Peggy Biolchini
March	Debra Evans
April	Linda Finsel
May	Doris Salis
June	<input type="text"/>
July	<input type="text"/>
August	<input type="text"/>
September	<input type="text"/>
October	<input type="text"/>
November	<input type="text"/>
December	Tim Brugeman

We have openings for June-July-August-September-October-November.

If interested in writing an article please contact
Judi Clymer at 419-345-8086 or bbjec94@bright.net
or
Laurie Pressel at 419-721-2581 or lauriepressel3@gmail.com

Refreshments for February 11th Meeting

Debra Evans and Rose Morrison

We need volunteers to sign up for refreshments for this year's meetings.

If interested please contact Linda Leiendecker at
419-889-2958 or lindaleien@gmail.com

Repotting Houseplants

Penn State University Extension

As your houseplant grows larger and the roots either begin to grow through the drainage holes or become pot bound, repotting the plant into a larger pot will become necessary. After deciding to repot, following a few steps is all that's needed to complete this task successfully. First though, have fun looking for and choosing a container that will really complement your houseplants.

Choosing a container

Many varieties of containers are available, but the container you eventually select should be based on your preference. There are, however, a few considerations to think about when choosing a container. The new container should be just slightly larger than the current one, as a container that is too large may look out of balance with the overall plant. Containers should not detract from the plant; rather the size, color, and material chosen should complement the size of the plant, leaf texture, and leaf and flower color. Before repotting, test perspective containers by placing potted plants inside them. Then place the plant in the location where you'll display it permanently, step back, and take a look at the entire combination. Ask yourself whether the color and texture of the container compliments or detracts from the plant. Is the size of the container appropriate, or is it too small or too big for the plant? If you are not pleased with the look, try another option and give the combination another critical look.

When choosing a container, the basic options are plastic and clay (terra-cotta), clay being available in glazed and unglazed. Both have advantages, and again the option you choose is primarily based on your preference. An advantage of choosing a plastic container is that it is lighter weight and easier to move than a clay pot when the plant and potting mix are added. Clay pots, on the other hand, are less likely to tip over when a plant becomes top heavy and the potting mix dries out.

Other advantages of using clay pots include reduced waterlogging and salt buildup, as the clay tends to pull water and soluble salts from the potting mix. For these same reasons, plants in clay containers will need to be watered more often than plants in plastic containers. The decorative features of these types of containers can be numerous, as more ceramic, fiberglass, and other synthetic containers are available for purchase.

Another option is to place potted houseplants in a potholder. Potholders can be made of metal, wood, or other decorative materials; however, they may not be suitable to plant a houseplant in. Instead, a potted houseplant can be slipped inside the container to achieve the desired look.

A container with drainage holes is necessary for excess water to drain, preventing the potting mix from becoming waterlogged--this can contribute to potential disease problems. Drill holes in the bottom of a container if necessary. Then use a drip tray to collect excess water and prevent furniture or surfaces that are not waterproof from becoming damaged. If it is not possible to drill a hole through a decorative container, first repot the plant into a container with a drainage hole and then use the decorative container as a potholder. Make sure that there is space between the drainage hole and the bottom of the decorative container to allow water to drain freely from the potting mix.

(Continued)

Repotting Houseplants

(Continued)

Deciding if the plant is pot-bound

The best time to repot a plant is in the spring so that actively growing roots will have enough time to grow into newly added potting mix. There are several signs that houseplants can exhibit when they are pot-bound. First check the frequency you are watering the houseplant.

Do you notice that the potting mix dries out quickly even during periods of cooler temperatures?

Also, are any roots growing through the drainage holes?

Does it appear that the foliage and stems have either stopped growing or growth has slowed even when fertilized regularly in spring and summer?

If the answer to any of these questions is yes, remove the plant from the container and examine the roots. If the roots are circling around the root ball or are so dense that it is difficult to see any potting mix in the bottom third of the root ball, it's time to repot.

When you discover that your houseplant is pot-bound, you have a few options. First you need to decide whether you want the plant to continue to grow larger or if you're satisfied with the current size. If you don't want a larger plant, it will be necessary to remove the outer section of plant roots, return the root ball to the container with some new potting mix, and cut back some of the plant's top growth. If the goal is to let the plant grow larger, get ready to repot it.

Choosing potting mix

Using garden soil in indoor containers for houseplants could lead to disease and pest problems. Instead, choose a potting mix or potting soil especially created for potted plants. These could include a composted soil or peat mixture with fertilizers to supply nutrients. A peat-based potting mix will weigh less than a soil-based mix; however, it is more difficult to wet if it dries out. Wet the potting mix prior to repotting houseplants to ensure that the potting mix will absorb water evenly. To create your own potting mix refer to the fact sheet entitled "Homemade Potting Medium."

Repotting the plant

After you chose an appropriate container and potting mix, you can begin the repotting process. Water the plant in its original container and let it sit for one hour before repotting. If the container was used previously make sure that it is clean before you start. If you have a new plastic container, no preparation is necessary. A new clay container will require overnight soaking in water. This will prevent the container from soaking up any moisture from the potting mix when the plant is first repotted. If using a clay container with drainage holes, place a few pieces of a broken clay container over the hole. This will allow excess water to drain through the hole, but prevents potting mix from doing so. Next, remove the plant and gently "tease" the roots so that they are no longer circling the root ball or are densely matted. Place some potting mix in the container so that when the root ball is placed on top, the top of the root ball is slightly below the lip of the new pot.

Then add more potting mix around the root ball and gently firm the top layer so that the potting mix fills the container, but is not so compacted that it restricts water and air movement into and through the pot. When filling the container, leave an inch of space between the potting mix and the top of the container so that there is room for water and additional plant growth. Next, water the potting mix and place it its intended location.



IT'S Time To.....February

Ohio State University Extension

FEBRUARY 4

- Start houseplants from seed for a challenge.
- Grow vegetables among your flowers.
- Grow fresh parsley and other herbs in containers in a sunny window.
- Look for disease-resistant varieties when ordering seeds.
- Wash and sterilize seed-starting containers.
- Read garden magazines and books for new ideas for your garden.
- Visit an arboretum to see plants with winter interest.
- Plan to grow extra vegetables in 2022 to share with the needy.
- Provide fresh water for wildlife.

FEBRUARY 11

- Force paper white narcissus bulbs.
- Look through seed and nursery catalogues for gardening ideas.
- Draw your vegetable garden plan on paper.
- Clean and sharpen garden tools.
- Share seed orders with a friend and save money.
- Use sterilized soil or soilless mix when starting seeds indoors.
- Avoid walking on the lawn during thaws.
- Provide food and water for wildlife.

FEBRUARY 18

- Give your Valentine a plant or a gift certificate for garden supplies.
- Consider planting some fruit this year.
- Cool colors, such as blues and purples, give a small area a more expansive feeling.
- Know your USDA plant hardiness zone before ordering plants.
- Cottonseed meal can lower soil pH.
- Cool temperatures extend the life of cut flowers.
- Start tuberous begonias for June bloom.
- Use dwarf plants where space is limited.

FEBRUARY 25

- Repot rootbound houseplants.
- Get pruning tools sharpened and ready for use.
- Review your gardening plans for 2022
- Replant frost-heaved plants.
- It is too early to apply dormant oil.
- Make plant labels from plastic bleach and milk bottles.
- Give unwanted garden catalogs to teachers and childcare workers.
- Start garden plants from seed indoors.
- Provide food and water for wildlife.
- Purchase vegetable seeds from your favorite suppliers.
- Purchase nursery stock for planting next month.
- Get pruning tools sharpened and ready for use.
- Repot rootbound houseplants.
- Prune grapes and blueberries.
- Plant shade-loving plants in the shade.
- Propagate dracaena, rubber plants and dumb cane by air-layering.
- Consider adding ferns to the garden.
- Food sources are limited; continue to provide food for wildlife.



THE OHIO STATE UNIVERSITY

COLLEGE OF FOOD, AGRICULTURAL,
AND ENVIRONMENTAL SCIENCES

Ohio State University Extension
Hancock County
7868 County Road 140 Suite B
Findlay, OH 45840
419-422-3851
Facebook: Master Gardeners of Hancock County Ohio
hancock.osu.edu

HAPPINESS IS



...buying plants.

The Master Gardener “Green Thumb Prints” is a publication of the Ohio State University Extension, Hancock County, 7868 County Road 140 Suite B Findlay, OH 45840 419-422-3851.

CFAES provides research and related educational programs to clientele on a nondiscriminatory basis. For more information, visit cfaesdiversity.osu.edu. For an accessible format of this publication, visit cfaes.osu.edu/accessibility.